



BERGSCHAU

KOPEC
KREATIVITY

7.5.—6.6.2025
Buntspeicher | Zwönitz

24.6.—12.7.2025
Výměník | Karlovy Vary

EN

Innovative and diverse. Extraordinary and colorful. Unique and rooted in tradition. Rural, yet right in the middle of it all. The Ore Mountains can be just about anything.

The “Bergschau” — or Kopec Kreativity in Czech — shines a light on the vibrant and multifaceted cultural and creative scene of the Ore Mountains and the neighboring Czech regions.

A total of 12 sectors of the creative industries, ranging from visual arts, design, architecture, music, and performance to film, digital media, and crafts, showcase their full potential here.

Curated by an independent jury, the best works from both countries have been selected and are being presented together for the very first time.

Taking place as part of the Chemnitz 2025 European Capital of Culture program, the Bergschau stands as a testament to a creative community that is shaping its region with passion, inventiveness, and the courage to create and whose work resonates across borders.

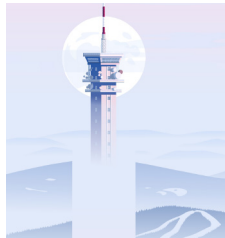
This collaborative project, organized together with 4K Agentura, Kreativni UK, and KREATIVES SACHSEN, and supported by the main project Makers, Business & Arts of the European Capital of Culture Chemnitz 2025, as well as Buntspeicher Zwönitz, is funded by the Czech–German Future Fund.

Alexander Mikoláš MIKOLÁŠ S.R.O.

alexandermikolas.com

The history and landscape of the Ore Mountains, especially the combination of wild nature and industry, fascinate Alexander. He focuses on a slightly fantastical depiction of the buildings in his digital paintings, which he presents in a modern way in the series Ore Mountain Fairytales.

Karlovy Vary | Graphic Design |
ORE MOUNTAIN FAIRY TALES



Anett Schuster ATELIER IM ALTEN KESSELHAUS



The installation Weißwäsche consists of seven hand-lacework towels and recalls the traditional practice of washing outdoors. Made from recycled materials such as old laundry lines, hemp, and wool remnants, the towels tell of the transience and value of handcrafted work.

Chemnitz | Installation, Textile,
Upcycling | WEISSWÄSCHE

anettschuster.de

BENJAMIN KNOBLAUCH

garlix-art.de

Influenced by graffiti, the spray can is the artist's preferred tool, with which he has beautified many walls in the Ore Mountains. For this pop-assemblage work, plastic waste from nature was used to raise awareness of the waste problem in this unique region.

Hohndorf | Installation,
Painting | FISCH'N



Carolyn Tennstädt MACARONIE DESIGN STUDIO

Annaberg-Buchholz | Installation,
Painting | ANBINDUNG

macaronie.de

This installation of printed mirror elements creates a reflective space – between image and viewer, between outward appearance and inner reflection. The work makes transitions visible, encourages exploration of boundaries, and stimulates the thinking of new forms of dialogue.



DANIEL FILIP

Karlovy Vary | Painting, Wood |
LAMP I. HARMONY



The artist, who grew up in the tradition of painting and wood sculpting, incorporates regional materials into his works and draws inspiration from nature. This lamp, made from beech wood from the forests around Karlovy Vary, reflects the mystical atmosphere of the Ore Mountains.

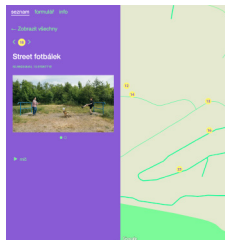
danielfilip.cz

ELIS KONDELÍKOVÁ

Ústí nad Labem | Creative
technology | MILADA IS MINE(D)

miladaismined.web.app

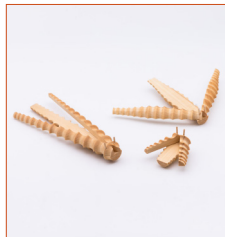
This interactive map is the result of an investigation into the remnants around Lake Milada. The map leads to interesting areas and allows you to rediscover the territory and history of the former Chabařovice mine. You can also add unseen paths to the map.



HANNAH BAYER

A collection of interlocking wooden figures that transform into insects when their feelers are extended. These shape studies showcase the possibilities of turning and combine traditional craftsmanship with playful design.

Schneeberg | Product design,
Wood | VOLARE



Ina Goetz UNDOYARN



Rethinking textile cycles – industrial knitwear is deconstructed to reclaim and reuse the yarns, creating a sustainable loop that conserves resources and makes materials available for new textile uses.

Chemnitz | Craft |
UNDOYARN

IG@undo.yarn

INTERAKTIVNÍ GALERIE BECHEROVA VILA

The educational program „In the Footsteps of Porcelain“ brings visitors closer to the history and production of porcelain. In workshops, visitors can try casting and decorating porcelain themselves, while also learning about the history and origin of the white wealth of West Bohemia.

Karlovy Vary | Creative Education |
PO STOPÁCH PORCELÁNU



IG@becherovavila

Isabell Kosmitzki KATL & BELL

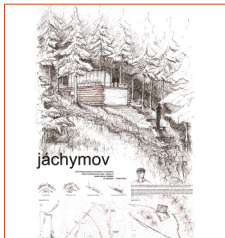
kati-bell.de

The probably most well-known figures of the Ore Mountains are here reinterpreted using crochet and needle felting techniques. Deeply connected to the traditions and crafts of their homeland, Katl' and Bell showcase their interpretation of form and design in the ancient craft of felting.

Schneeberg | Craft |
ENGEL & BERGMANN



Jakub Ficenc ARCHIKOUTEK



Karlovy Vary - Hůrky | Architecture |
ON THE SLOPES OF JÁCHYMOV

Students from the Faculty of Architecture and Civil Engineering at the Czech Technical University in Prague have designed various uses for the decommissioned Jáchymov Střed ski slope. The designs range from monuments to small accommodations and spark discussions about the region.

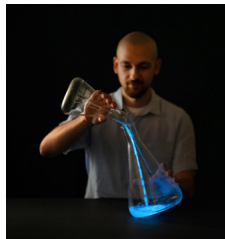
archikoutek.cz

Jan Šugar BIOLUMOS

biolumos.cz

An interactive installation with bioluminescent plankton allows you to experience bioluminescence even in a home environment. Gentle flashes of light mimic the natural behavior of plankton in the wild.

Ostrov | Product design |
BIOLUMOS



JANNIK ZIELKE

The cow Ingeborg is a participatory project where individual rocking cows are created from simple, pre-prepared parts. Easy to assemble, it invites creative design – all in the spirit of „I can do that too!“

Schneeberg | Product design,
Hračky | INGEBOG



Jens Korch PAPERENTO VERLAG & CLAUDIA PUHLFÜRST

Chemnitz | Publishing |
BLACHMANNLE & HODRLUMPN



This book lovingly gathers the most unusual village names of the region – from Pflaumetoffeln to Bachelkratzer. Over 100 submissions from the local population show that almost every village has its own nickname – and a story to go with it. A piece of living language and Ore Mountain identity.

paparento.de

Jitka Tomanová ATELIÉR JITKY TĚ

Karlovy Vary | Fashion
design | WILDERNESS

A series of unconventional woodcuts, inspired by life between Ore Mountain nature and the urban jungle. Printed with an old skateboard, which becomes part of the work, and on selected second-hand denim jackets in the fashion collection.

atelierjitkyte.cz



Kathleen Scheurer CULTFORM

Glauchau | Product design, Craft |
OSKAR. PAUL. WALTER.

cultform.de

The three figures Oskar, Paul, and Walter are a tribute to the Bauhaus – flexible, playful, and modular. They can be broken down into their basic shapes and reassembled. Handcrafted in Seiffen, they combine craftsmanship with design, play, and modern aesthetics.



Kristin Kuntze REIFENRING

Chemnitz | Craft |
REIFENRING



The special feature of the handcrafted table wreath lies in the creation of its wooden figures: the traditional craft of ring turning, which is as unique as it is distinctive to Seiffen. This historic technique is reinterpreted and presented with a ring of turned wood in a contemporary design context.

reifenring.de

Lenka Sárová Malíská STUDIO MALÍSKÁ

Karlovy Vary | Porcelain |
LOKET IMPRESSION

maliska.cz

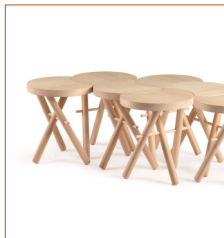
This porcelain collection was created through a memorandum between Studio Malíská and Loket Castle. The artist discovered patterns in the castle's archive, originally used for blue-print printing, and applied them to porcelain pieces. The collection, featuring mugs, cups, and vases, reflects the history of the Karlovy Vary region.



LOTTE PÖNNIGHAUS

Sitting, carving, and talking – The stools create conversational settings through their open seating surfaces, encouraging owners to engage with one another. The Kulturkreise project aims to highlight similarities and differences by expanding the collection.

Schneeberg | Industrial design,
Wood | KULTURKREISE



LUISE ULLRICH



The light angels made from local woods and tin combine clean shapes with finely tuned colors. The contrast between the smooth wood and the rough texture of the tin gives each angel its own personality. Tradition and innovation meet here in timeless elegance.

Schneeberg | Product design |
ORE MOUNTAIN LIGHT ANGELS

Markéta Donátová SUDEŤAČKA

The artist's great-grandfather was tortured for 12 years in the uranium mines of Joachimsthal, leading to intergenerational trauma in the family. The artist projects the imprints of the past onto the mine's elevator shafts and creates Zelochoď as a guardian of the elevator riders.

IG@sudetacka

Karlovy Vary | Sculpture,
Installation | ZELOCHOD



BOYS FROM THE WOOD ORIGINAL FÜCHTNER

Kurort Seiffen | Woodworking |
VANDAL CANDLE

The displayed objects have their roots in the Ore Mountain craftsmanship and combine traditional forms and techniques with contemporary design. The „Vandal Candle,“ created in collaboration, shows how centuries-old craftsmanship can give rise to new, forward-looking expressions.



boysfromthewood.de

DENKSTATT – ERZGEBIRGE

Seiffen | Product design |
MIRIQUIDI KIDS IN THE FOREST



Inspired by Ore Mountain children's toys (Vero Construct), a mobile, customizable camp system for children has been developed. It promotes communal nature experiences, interaction, and creativity. The project is supported by „Weitergehen am Purple Path“ and the European Capital of Culture Chemnitz 2025.

denkstatt-erzgebirge.de

DENKSTATT – ERZGEBIRGE

Seiffen | Industrial design,
Creative education

A platform for the region that promotes innovative ideas in Ore Mountains arts and crafts. It showcases a variety of creative approaches and traditional techniques deeply rooted in the region's identity, thus creating space for new developments while preserving traditions.



denkstatt-erzgebirge.de

ZUKUNFT WESTERZGEBIRGE E. V.

zukunft-westerzgebirge.eu

The mobile escape room in a tiny house format makes the creation of the Ore Mountains and its culture interactively experienceable – across six stations, created with regional collaborators. The model provides a preview of a LEADER project that conveys history playfully and fosters new partnerships.

Aue – Bad Schlema | Creative
education | MINING RUSH



ATELIER HANS BROCKHAGE



This bronze sculpture by Hans Brockhage represents a break with conventions and the dialogue between tradition and modernity. Cast in the Czech foundry Roman Pecher, it reflects Brockhage's influential impact on art in the Ore Mountains – powerful, minimalist, and full of presence.

Schwarzenberg |
Sculpture | REBEL II

atelierhansbrockhage.de

Nela Havlíčková NELA PORCELÁN

nela-porcelan.cz

A playful selection of porcelain cups and mugs that fully explores the technical and aesthetic possibilities of the material. Behind the Ear emphasizes the forms and thus highlights the creative potential of porcelain.

Mariánské Lázně | Porcelain |
ZAUCHEM



Nico Neef PICNICS.

FB@PICNICS.DESIGN

The map of band networking in the Ore Mountains makes the region visible as a creative network. With artworks and selected releases, the presentation showcases the musical potential of the scene – a living testament to the Ore Mountains being both an idea forge and a sound space.

Schneeberg | Graphic design, Music | A MUSIC MOUNTAIN MONUMENT



Nils Kochan KOFFERSTUDIO TRICKFILM



A set of characters, backgrounds, and stories from the Ore Mountains. Using instructions and scripts, stop-motion animated films can be created. With sound and shared on social media, the project connects the Ore Mountains' wooden toy-making tradition with digital creativity.

Frauenstein | Animation | MANN'L IN MOTION

kochan.net

Norman Horatzscheck HORATZSCHECK KUNSTHANDWERK

holz-form-farbe.de

The Klötz'l collection reinterprets the candle arch: each light stands individually and can be flexibly placed on a windowsill, table, or sideboard. With an attachable wing, it transforms into a timeless pyramid – inspired by the Mettenschicht tradition, where pit lamps symbolize the candle arch.

Tannenberg | Product design | KLÖTZ'L

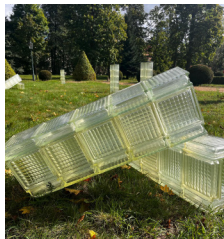


Petr Köhler REZ DESIGN

rezdesign.cz

The light installation Pillars of the Mountains transforms recycled glass luxury panes into glowing carriers of regional memory. It combines industrial heritage with contemporary design and invites dialogue on sustainability, innovation, and the cultural identity of the Ore Mountains.

Sokolov | Industrial design |
MOUNTAIN PILLARS



Pia Hackner NEUSCHNEE



The brand Neuschnee showcases products and unique artworks by students and alumni of Applied Arts Schneeberg. It is a space where ideas grow and first market experiences are made. Creativity becomes tangible through traditional craftsmanship.

neuschnee.store

Schneeberg | Product design,
Furniture | NEUSCHNEE

Ramona Markstein ATELIER KATZ23

atelier-katz23.de

Since 2023, the artist has been developing the series of paintings „Cultural Landscape,“ which deals with the traces of mining and the history of the Ore Mountains. The works exemplify the impact of human activity on the region.

Hartenstein | Painting |
SHAFT 371



Roy Fritzsche FICHTN

fichtn.de

The street fashion label FICHTN blends urban fashion with roots in the Ore Mountains. Since 2015, a project has grown into a brand with attitude, quality, and a strong network. In Bergschau, FICHTN presents a selection of successful pieces – an expression of regional creativity with global impact.

Lengefeld | Fashion design |
FICHTN



SYLVIA GRAUPNER ILLUSTRATION



This pamphlet accompanies a bike tour from Annaberg across the Czech Ore Mountain Ridge to the Elbe. In the form of a graphic novel, it unfolds both an outer and inner journey, with the Ore Mountains becoming a landscape of the soul – an echo of personal thoughts.

Annaberg-Buchholz | Book,
Illustration | UNDER THE OPEN SKY

graupner-illustration.de

Tomáš Dolejš STEEL ART

tomasdolejs.cz

The fascinating expression of the eyes takes center stage: In an instant, our eye muscles transform communication. The geometric steel gaze captures the depth of a look with minimalism, embraces change through rust, and reflects the interplay of communication and art.

Karlovy Vary | Sculpture |
EYELANGUAGE



Štěpánka Kolesnyk Pitterová TULOUŠ

tulous.cz

The brand Tulouš presents decorative cushions and blankets made from pure sheep wool, sourced exclusively from a local company that collaborates with Europe's largest worsted spinning mill, Vlnap Nejdek. Tulouš combines traditional craftsmanship with modern home decoration.



Karlovy Vary | Textile, Craft |
GIGANTIC BLANKET AND PILLOW

Ulrich Haselhuhn HASELHUHN MODELLBAU / LINOBILDBAUEREI

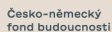


The Upcycling Linoleum project focuses on sustainable waste prevention through the creative deconstruction of materials and techniques – a deeply Ore Mountain tradition of constantly creating something new. The resulting works are inclusive, boundary-crossing, and tangible.

Chemnitz | Upcycling |
STOLZ, FON, RDECA

haselhuhn.de

Partners



Krušné hory

Erzgebirge

bergschau.art